



Pixact Stock Monitoring

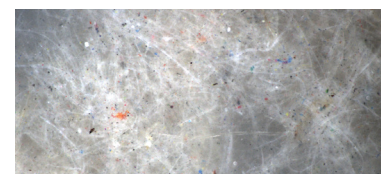
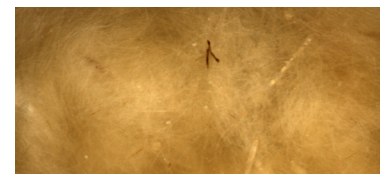
The Pixact Stock Monitoring (PSM) technology is designed for the inline analysis of impurities and color of flowing pulp suspension. The technology combines inline process microscopy with advanced image analysis techniques.



Customers' experiences with PSM

“We have adapted Pixact Stock Monitoring to our service concept. With PSM we can support our customers in troubleshooting, optimisation and development of new products.”

“We are able to react faster to process disturbances.”



PSM is applicable to bleached, brown and recycled stock real-time & inline – no need to prepare samples

Benefits

In a pulp mill

- Analysis of uncooked components (shives etc.) already from the brown stock
- Adaptation of washing, delignification and bleaching operations to varying impurity levels
- Monitoring of the final pulp quality (impurities & color)

In paper and board mills

- Installation in stock preparation, broke system and short circulation enable real time control of the process.
- Installation of Pixact Stock Monitoring to several locations helps to track the origin of impurities and enabling efficient corrective measures.

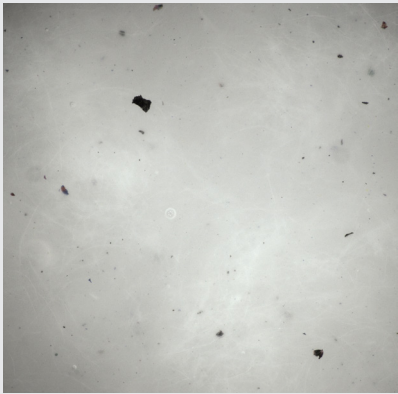
Measurement data

The results provided by the PSM system:

- Number of particles (e.g. pcs/m² or pcs/kg)
- Size (diameter or area), shape and color of each particle
- Particle classification and statistics for each class separately
- Images of detected particles are stored on the hard drive for later inspection
- Average pulp brightness/color
- Self-diagnostics

Live view of the process

The measurement system displays microscope quality live image of the pulp suspension



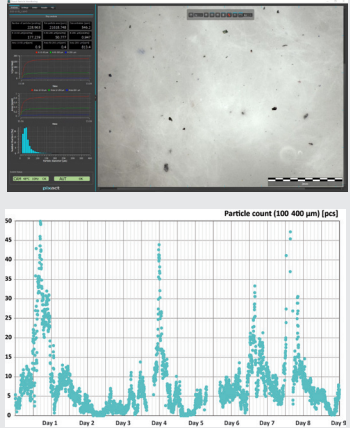
Detection of impurities

Impurities are detected from the image data and classified according to their visual characteristics

brown			
bleached			
recycled			

Analysis and reporting

Real-time data on particle count and other statistics is reported to DCS



Pixact Solution

Supported by a selection of Pixcell FL and Pixscope FL imaging units, PSM can be fitted into a variety process phases and equipment.

